



Earline Weber Mollere

June 20, 1924 - October 21, 2015

Earline Weber Mollere passed away peacefully on Wednesday, October 21, 2015 at 1:32 p.m. She was 91, a native and life-long resident of Reserve, LA. Beloved wife of the late Wilbert J. 'Pee Wee, Buddy' Mollere. Mother of Craig Mollere (Alice), Kevin Mollere (Janet) and Libby Mollere Englade (Norman, Jr.). Daughter of the late Noe Weber and Norma Jacob Weber. Sister of the late Howard Weber (Elma), Noelie Weber Breaud (Felix), Norman 'Shot' Weber (Doris), Norma Weber, Jules Weber (Mabel), Hayes 'Creepy' Weber (Marilyn), and Helen 'Dolly' Weber Blouin. Grandmother of Christie, Erica, Halie, and Sadie Englade, Crystal (Keith Rushing), Cindy, Chad (Stephanie), Chance (Sherry), Chase, Corrin (Brad Garcich) and Aaron Mollere. Also survived by 18 great-grandchildren, 9 great-great grandchildren and many nieces and nephews. She was the owner of Mollere Furniture Store in St. John the Baptist Parish.

The family would like to thank all of her care givers Katrina Pellissier, Jura Dell Veron, Janie Graffia, Johonna Triche, and St. Joseph Hospice, her nurse Dulce Favrot for their care and attention.

Relatives and friends are invited to attend the Funeral Service at Millet-Guidry Funeral Home, 2806 W. Airline Hwy, LaPlace on Monday, October 26, 2015 at 11:00 a.m. Visitation from 9:00 a.m. until 11:00a.m. Interment in St. Peter Cemetery. To view or sign the online guest book, please visit www.milletguidry.com

Cemetery Details

St. Peter Cemetery

1550 Hwy 44
Reserve, LA 70084

Previous Events

Visitation

OCT **26**. 9:00 AM - 11:00 AM (CT)

Millet Guidry Funeral Home
2806 W Airline Hwy
Laplace, LA 70068
(985) 536-7700
info@milletguidry.com
<https://www.milletguidry.com>

Service

OCT **26**. 11:00 AM (CT)

Millet Guidry Funeral Home
2806 W Airline Hwy
Laplace, LA 70068
(985) 536-7700
info@milletguidry.com
<https://www.milletguidry.com>

Tribute Wall



“ *Earline Weber Mollere*

October 05, 2023 at 08:59 AM



“ *I am so very sorry for your loss. The Bible makes this comforting promise: "Jehovah is close to the brokenhearted, he saves those who are crushed in spirit." (Psalm 34:18) It also assures us: "Throw your burden on Jehovah, and he will sustain you." (Psalm 55:22) May these thoughts bring you a measure of comfort at this difficult time.*

K - October 28, 2015 at 08:24 PM



“ *Share a memory of Earline Weber Mollere or send condolences to the family.*



laurie cox - October 23, 2015 at 04:47 AM



Mrs.mollere has been an icon in st.john.pariah and we be for the unbearable future. Laurie Cox. Ponchatoula.la

laurie cox - October 23, 2015 at 04:50 AM

VF

From The Landry Family We Send Sympathy For The Great Loss Of Mrs. Mollere. 🙏??Praying That Loving Memories Help Carry Every One Of You Through Your Sadness. With Each New Day May Peace Find A Place In Your Heart ! We Are Truly Thinking Of You At This Difficult Time ! ❤️🙏??

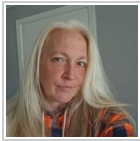
Vickie & Whitey Landry & Family - October 26, 2015 at 09:03 AM

MA

“ *So sorry for the loss of your mother my prayers and thoughts are with at this time of sorry MaryGueret Miller AND marvin Scopey*



mary - October 22, 2015 at 03:05 PM



“ *Nadine Duhe lit a candle in memory of Earline Weber Mollere*



Nadine Duhe - October 22, 2015 at 01:19 PM